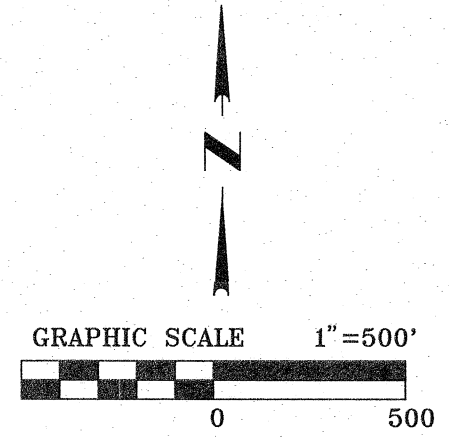


ALTA / NSPS LAND TITLE SURVEY



18 SURVEYOR CERTIFICATION

To: REDI, Jim Day, The City of Texarkana, Arkansas Public Facilities Board, Farmers Bank and Trust Company, and Twin City Title of Arkansas LLC dba Miller County Abstract & Title

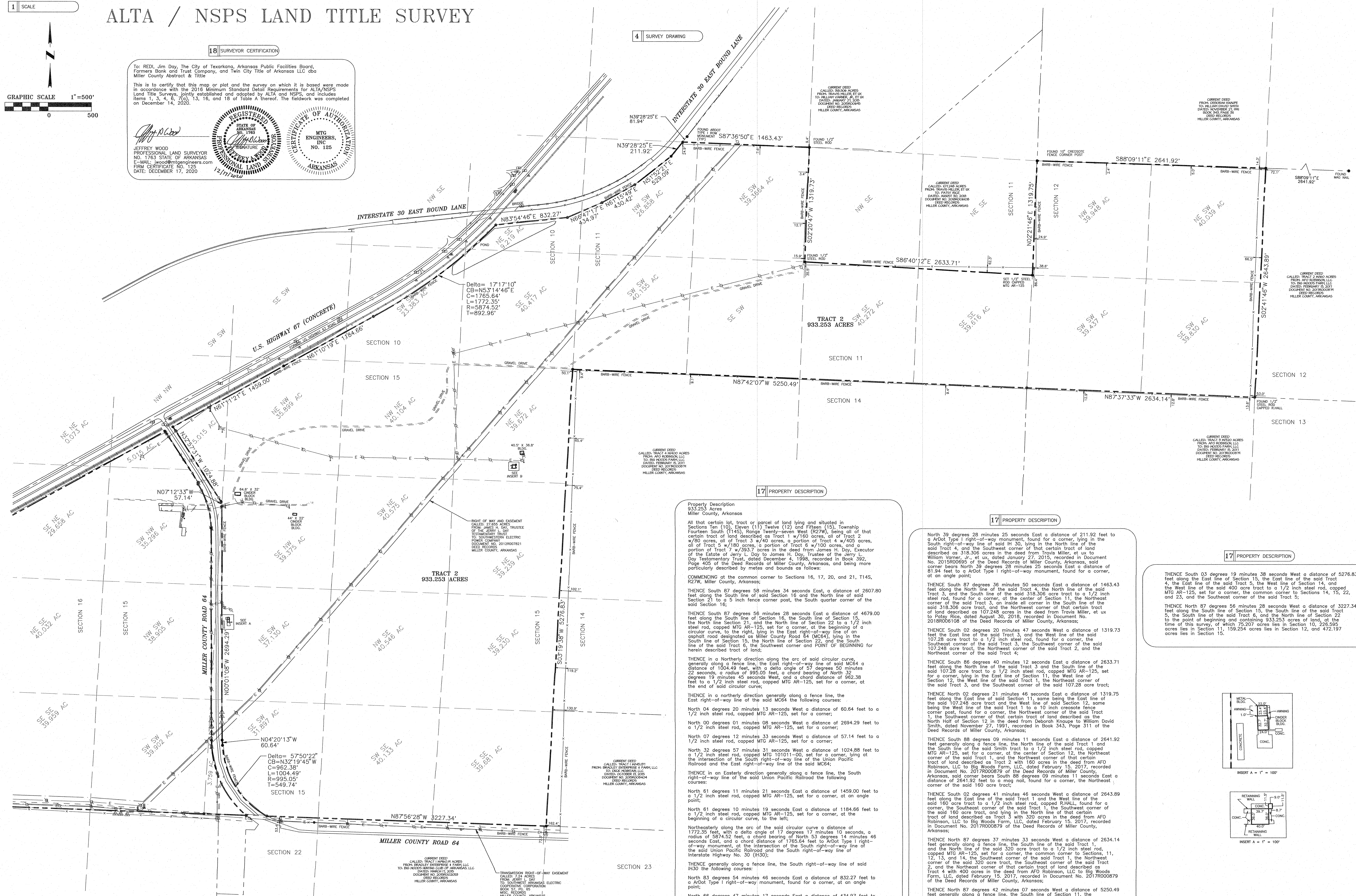
This is to certify that this map or plot and the survey on which it is based were made in accordance with the 2016 Minimum Standard Detail Requirements for ALTA/NSPS Land Title Surveys, jointly established and adopted by ALTA and NSPS, and includes items 1, 3, 4, 5, 7(a), 13, 16, and 18 of Table A thereof. The fieldwork was completed on December 14, 2020.

Jeffrey Wood
 JEFFREY WOOD
 PROFESSIONAL LAND SURVEYOR
 NO. 1783 STATE OF ARKANSAS
 E-MAIL: jwood@mtgengineers.com
 FIRM CERTIFICATE NO. 125
 DATE: DECEMBER 17, 2020

REGISTERED PROFESSIONAL LAND SURVEYOR
 STATE OF ARKANSAS
 NO. 1783

MTG ENGINEERS, INC.
 NO. 125
 PROFESSIONAL LAND SURVEYOR
 STATE OF ARKANSAS

4 SURVEY DRAWING



17 PROPERTY DESCRIPTION

Property Description
 933.253 Acres
 Miller County, Arkansas

All that certain lot, tract or parcel of land lying and situated in Sections Ten (10), Eleven (11), Twelve (12) and Fifteen (15), Township Fourteen South—Range Twenty—seven West (R27W), being all of that certain tract of land described as Tract 1 w/180 acres, all of tract 2 w/180 acres, all of tract 3 w/400 acres, a portion of tract 4 w/400 acres, all of tract 5 w/180 acres, a portion of tract 6 w/100 acres, and a portion of tract 7 w/383.7 acres in the deed from James H. Day, Executor of the Estate of Jerry L. Day to James H. Day, Trustee of the Jerry L. Day Testamentary Trust, dated December 4, 1998, recorded in Book 392, Page 405 of the Deed Records of Miller County, Arkansas, and being more particularly described by metes and bounds as follows:

COMMENCING at the common corner to Sections 16, 17, 20, and 21, T14S, R27W, Miller County, Arkansas;

THENCE South 87 degrees 58 minutes 34 seconds East, a distance of 2607.80 feet along the South line of said Section 16 and the North line of said Section 21 to a 5 inch fence corner post, the South quarter corner of the said Section 16;

THENCE South 87 degrees 56 minutes 28 seconds East a distance of 4679.00 feet along the South line of Section 16, the South line of Section 15, the North line of Section 21, and the North line of Section 22 to a 1/2 inch steel rod, capped MTG AR-125, set for a corner, at the beginning of a circular curve, to the right, lying in the East right-of-way line of an asphalt road designated as Miller County Road 64 (MC64), lying in the South line of Section 15, the North line of Section 22, and the South line of the said Tract 6, the Southwest corner and POINT OF BEGINNING for herein described tract of land;

THENCE in a Northerly direction along the arc of said circular curve, generally along a fence line, the East right-of-way line of said MC64 a distance of 1004.49 feet, with a delta angle of 57 degrees 50 minutes 22 seconds, a radius of 995.05 feet, a chord bearing of North 32 degrees 19 minutes 45 seconds West, and a chord distance of 862.38 feet to a 1/2 inch steel rod, capped MTG AR-125, set for a corner, at the end of said circular curve;

THENCE in a northerly direction generally along a fence line, the East right-of-way line of the said MC64 the following courses:

North 04 degrees 20 minutes 13 seconds West a distance of 60.64 feet to a 1/2 inch steel rod, capped MTG AR-125, set for a corner;

North 00 degrees 01 minutes 08 seconds West a distance of 2694.29 feet to a 1/2 inch steel rod, capped MTG AR-125, set for a corner;

North 07 degrees 12 minutes 33 seconds West a distance of 57.14 feet to a 1/2 inch steel rod, capped MTG AR-125, set for a corner;

North 32 degrees 57 minutes 31 seconds West a distance of 1024.88 feet to a 1/2 inch steel rod, capped MTG AR-125, set for a corner, lying at the intersection of the South right-of-way line of the Union Pacific Railroad and the East right-of-way line of the said MC64;

THENCE in an Easterly direction generally along a fence line, the South right-of-way line of the said Union Pacific Railroad the following courses:

North 61 degrees 11 minutes 21 seconds East a distance of 1459.00 feet to a 1/2 inch steel rod, capped MTG AR-125, set for a corner, at an angle point;

North 61 degrees 10 minutes 19 seconds East a distance of 1184.66 feet to a 1/2 inch steel rod, capped MTG AR-125, set for a corner, at the beginning of a circular curve, to the left;

Northeasterly along the arc of the said circular curve a distance of 1772.35 feet, with a delta angle of 17 degrees 17 minutes 10 seconds, a radius of 5874.52 feet, a chord bearing of North 53 degrees 14 minutes 46 seconds East, and a chord distance of 1745.64 feet to Arbol Type 1 right-of-way monument, at the intersection of the South right-of-way line of the said Union Pacific Railroad and the South right-of-way line of Interstate Highway No. 30 (I30);

THENCE generally along a fence line, the South right-of-way line of said I30 the following courses:

North 83 degrees 54 minutes 46 seconds East a distance of 832.27 feet to a Arbol Type 1 right-of-way monument, found for a corner, at an angle point;

North 66 degrees 47 minutes 17 seconds East a distance of 434.97 feet to a Arbol Type 1 right-of-way monument, found for a corner, at an angle point;

North 61 degrees 15 minutes 49 seconds East a distance of 430.42 feet to a Arbol Type 1 right-of-way monument, found for a corner, at an angle point;

North 51 degrees 52 minutes 21 seconds East a distance of 529.09 feet to a Arbol Type 1 right-of-way monument, found for a corner, at an angle point;

17 PROPERTY DESCRIPTION

North 39 degrees 28 minutes 25 seconds East a distance of 211.92 feet to a Arbol Type 1 right-of-way monument, found for a corner, lying in the North right-of-way line of said I30, lying in the North line of the said Tract 4, and the Southwest corner of that certain tract of land described as 318.306 acres in the deed from Travis Miller, et ux to William Varnier, Jr., et ux, dated January 27, 2015, recorded in Document No. 2015R00695 of the Deed Records of Miller County, Arkansas, said corner bears North 39 degrees 28 minutes 25 seconds East a distance of 81.84 feet to a Arbol Type 1 right-of-way monument, found for a corner, at an angle point;

THENCE South 87 degrees 36 minutes 50 seconds East a distance of 1463.43 feet along the North line of the said Tract 4, the North line of the said Tract 3, and the South line of the said 318.306 acre tract to a 1/2 inch steel rod, found for a corner, at the center of Section 11, the Northeast corner of the said Tract 3, an inside all corner in the South line of the said 318.306 acre tract and the Northwest corner of that certain tract of land described as 107.248 acres in the deed from Travis Miller, et ux to Patry Rice, dated August 30, 2018, recorded in Document No. 2018R00108 of the Deed Records of Miller County, Arkansas;

THENCE South 02 degrees 20 minutes 47 seconds West a distance of 1319.75 feet the East line of the said Tract 3, and the West line of the said 107.28 acre tract to a 1/2 inch steel rod, found for a corner, the Southeast corner of the said Tract 3, the Southwest corner of the said 107.248 acre tract, the Northwest corner of the said Tract 2, and the Northeast corner of the said Tract 4;

THENCE South 86 degrees 40 minutes 12 seconds East a distance of 2633.71 feet along the North line of the said Tract 3 and the South line of the said 107.28 acre tract to a 1/2 inch steel rod, capped MTG AR-125, set for a corner, lying in the East line of Section 11, the West line of Section 12, the West line of the said Tract 1, the Northeast corner of the said Tract 3, and the Southeast corner of the said 107.28 acre tract;

THENCE North 02 degrees 21 minutes 46 seconds East a distance of 1319.75 feet along the East line of said Section 11, some being the East line of the said 107.248 acre tract and the West line of said Section 12, some being the West line of the said Tract 1 to a 10 inch creosote fence corner post, found for a corner, the Northwest corner of the said Tract 1, the Southwest corner of that certain tract of land described as 160 acres in the deed from AFO Robinson, LLC to Big Woods Farm, LLC, dated February 15, 2017, recorded in Document No. 2017R00879 of the Deed Records of Miller County, Arkansas, said corner bears South 88 degrees 09 minutes 11 seconds East a distance of 2641.92 feet to a mag nail, found for a corner, the Northeast corner of the said 160 acre tract;

THENCE South 02 degrees 41 minutes 46 seconds West a distance of 2643.89 feet along the East line of the said Tract 1 and the West line of the said 160 acre tract to a 1/2 inch steel rod, capped R.HALL, found for a corner, the Southeast corner of the said Tract 1, the Southwest corner of the said 160 acre tract, and lying in the North line of that certain tract of land described as Tract 3 with 320 acres in the deed from AFO Robinson, LLC to Big Woods Farm, LLC, dated February 15, 2017, recorded in Document No. 2017R00879 of the Deed Records of Miller County, Arkansas;

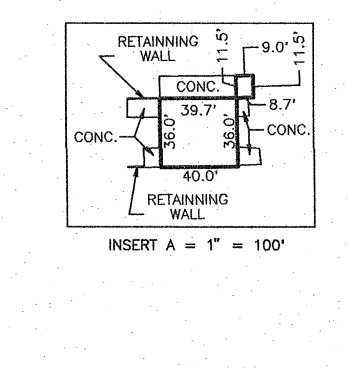
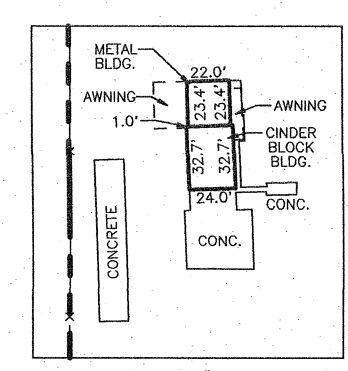
THENCE North 87 degrees 37 minutes 33 seconds West a distance of 2634.14 feet generally along a fence line, the South line of the said Tract 1, the North line of the said 320 acre tract to a 1/2 inch steel rod, capped MTG AR-125, set for a corner, the common corner to Sections 11, 12, 13, and 14, the Southwest corner of the said Tract 1, the Northwest corner of the said 320 acre tract, the Southeast corner of the said Tract 2, and the Northeast corner of that certain tract of land described as Tract 4 with 400 acres in the deed from AFO Robinson, LLC to Big Woods Farm, LLC, dated February 15, 2017, recorded in Document No. 2017R00879 of the Deed Records of Miller County, Arkansas;

THENCE North 87 degrees 42 minutes 07 seconds West a distance of 5250.49 feet generally along a fence line, the South line of Section 11, the South line of the said Tract 2, the East line of the said Tract 4, the North line of Section 14, and the North line of the said 400 acre tract to a 1/2 inch steel rod, capped MTG AR-125, set for a corner, the common corner for Sections 10, 11, 14, and 15, an inside all corner in the East line of the said Tract 4, and the Northwest corner of the said 400 acre tract;

17 PROPERTY DESCRIPTION

THENCE South 03 degrees 19 minutes 38 seconds West a distance of 5276.83 feet along the East line of Section 15, the East line of the said Tract 4, the East line of the said Tract 5, the West line of Section 14, and the West line of the said 400 acre tract to a 1/2 inch steel rod, capped MTG AR-125, set for a corner, the common corner to Sections 14, 15, 22, and 23, and the Southwest corner of the said Tract 5;

THENCE North 87 degrees 56 minutes 28 seconds West a distance of 3227.34 feet along the South line of Section 15, the South line of the said Tract 5, the South line of the said Tract 6, and the North line of Section 22 to the point of beginning and containing 833.253 acres of land, at the time of this survey, of which 725.207 acres lies in Section 16, 226.595 acres lies in Section 11, 159.254 acres lies in Section 12, and 472.197 acres lies in Section 15.



15 BASIS OF BEARINGS

THE BEARINGS ARE BASED ON GRID NORTH WITHIN THE "ARKANSAS COORDINATE SYSTEM OF 1983, SOUTH ZONE", NAD83 (GORS96, EPOCH 2002.0), AT THE SURFACE, WITH A BEARING OF NORTH 02 DEGREES 36 MINUTES 26 SECONDS EAST. THE COMBINED SCALE FACTOR TO GO FROM SURFACE TO GRID IS 0.99995355. THE FOLLOWING CONTROL MONUMENTS WERE USED TO ESTABLISH THE BASIS OF BEARINGS:

CONTROL MONUMENT #1
 N=163244.3204
 E=731466.4569

CONTROL MONUMENT #2
 N=154365.1219
 E=731589.1206

2 TRACTS IN PART OF SECTIONS 10, 11, 12, 15, AND 16, ALL IN TOWNSHIP 14 SOUTH, RANGE 27 WEST
 TEXARKANA, MILLER COUNTY, ARKANSAS
 JAMES H. DAY, TRUSTEE OF THE JERRY L. DAY TESTAMENTARY TRUST

Scale	1" = 500'
Drawn By	D.E.R.
Checked By	J.J.A.
File No.	

5850 GAMBERHILL ROAD
 TEXARKANA, TEXAS 75203
 F 803.832.4100
 M 803.832.4100
 T 803.832.4100
 www.mtgengineers.com
 AR COA NO. 125
 ©MTG 2020

MTG
 Engineers & Surveyors

TRACT 2

Scale	1" = 500'
Drawn By	D.E.R.
Checked By	J.J.A.
File No.	

5	0	0	-	1	4	S	-	2	7	W	-	0	-	1	0	-	2	0	-	4	6	-	1	7	6	3			
5	0	0	-	1	4	S	-	2	7	W	-	0	-	1	1	-	2	0	-	3	4	-	4	6	-	1	7	6	3
5	0	0	-	1	4	S	-	2	7	W	-	0	-	1	2	-	3	0	-	4	6	-	1	7	6	3			